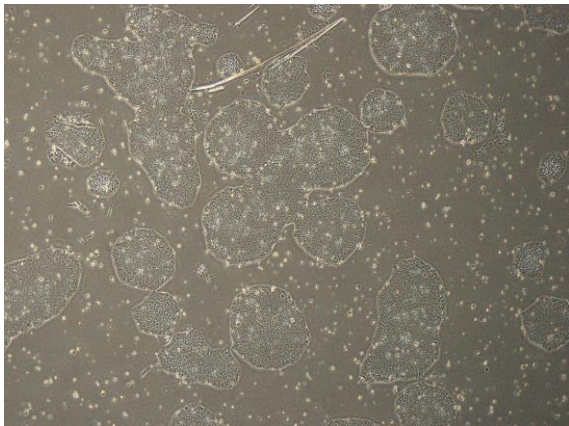
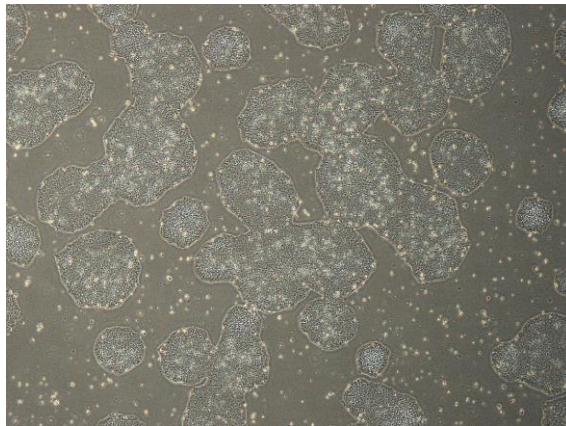


【 CiRA-j-1534 】 Morphology of iPSC colonies

CiRA-j-1534-A: passage-3



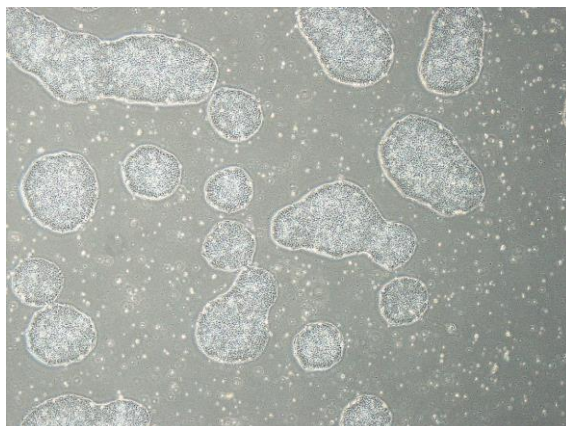
CiRA-j-1534-B: passage-3



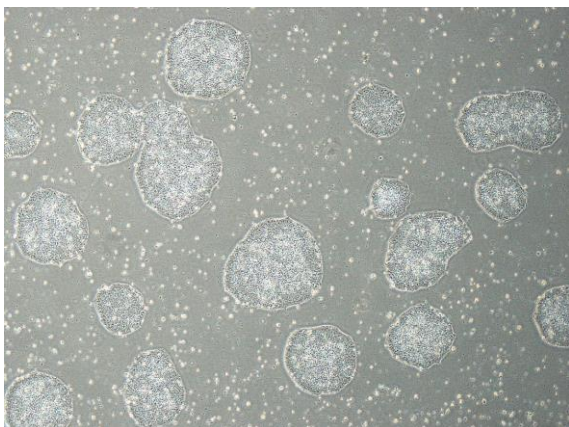
CiRA-j-1534-C: passage-3



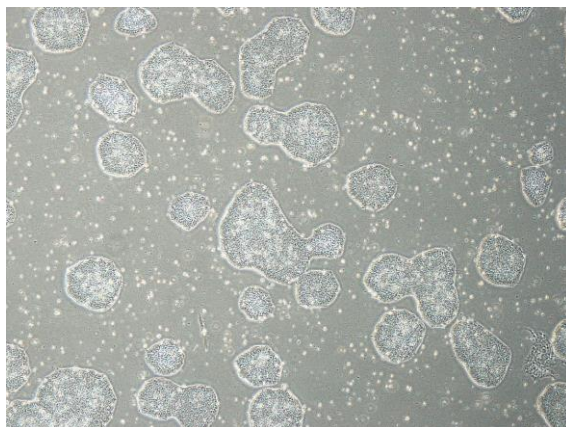
CiRA-j-1534-D: passage-3



CiRA-j-1534-E: passage-3



CiRA-j-1534-F: passage-3



(All images were captured at 4x magnification)